



GATHER AT 21c MUSEUM HOTEL AND THE HIVE

21c brings 12,000 square feet of art-filled gallery and event space to downtown Bentonville. Featuring a wide range of indoor and outdoor spaces, equipped with the latest audiovisual technology, the property can accommodate events ranging from an intimate cocktail gathering to board retreats, executive meetings and weddings.

Room	Dimensions	Square Footage	Ceiling Height	Banquet (rounds)	Banquet (rounds w/ podium or a/v)	Banquet (rounds w/ buffet or bar in room)	Reception	Hollow Square	Theatre	U-Shape	Conf.	Classrm	Crescent	Tradeshow (# of 6' tble in perimeter)	Tradeshow (# of 6' tble in perimeter & in middle)
Main Gallery	64' x 39'	2496	20'	160	136	136	330	65	216	56	70	128	102	14	24
Gallery One	59' x 20'	1180	17'	80	n/a	56	156	28	100	28	40	n/a	42	11	n/a
Gallery Two	23' x 14'	322	10'	16	10	10	27	12	26	12	15	15	12	5	n/a
Gallery Three	30' x 23'	690	10'	40	32	32	54	20	56	20	22	36	24	8	12
Gallery Four	18' x 29'	493	11'	32	24	24	40	15	36	15	16	21	24	6	n/a
Conference Room	17' x 23'	391	10'	12	n/a	n/a	n/a	n/a	n/a	n/a	12	n/a	n/a	n/a	n/a
Art Yard	39' x 55'	2145	n/a	100	n/a	n/a	250	n/a	150	n/a	n/a	n/a	n/a	n/a	n/a
North Yard	25' x 62'	1550	n/a	80	n/a	n/a	175	n/a	n/a	n/a	n/a	n/a	n/a	n/a	n/a
The Hive	67' x 27'	1809	13'	varies	n/a	n/a	n/a	n/a	n/a	n/a	n/a	n/a	n/a	n/a	n/a
The Hive Gallery	23' x 17'	391	13'	n/a	n/a	n/a	32	n/a	n/a	n/a	n/a	n/a	n/a	n/a	n/a
Private Dining Rm	30' x 20'	562	10'	32	24	n/a	45	15	26	15	16	n/a	24	n/a	n/a
Pantry	33' x 19'	627	10'	32	24	n/a	50	15	26	15	16	n/a	24	n/a	n/a



MEETING & EVENT SPACES

Name your need – board retreats, executive meetings, cocktail gatherings, reception dinners, charitable events, product launches, and more – and our experienced Events Team can handle it.



MAIN GALLERY
2496 SQ FT



GALLERY ONE
1180 SQ FT



GALLERY TWO (OFF THE LOBBY)
322 SQ FT



GALLERY THREE
690 SQ FT



GALLERY FOUR
493 SQ FT



21c SUITE TERRACE
474 SQ FT



PRIVATE DINING ROOM
562 SQ FT



ART YARD
2145 SQ FT



MEETING + EVENT SPACE FLOORPLAN

Main Gallery

Not just another pretty space, this gallery is equipped with some serious a/v technology.

Features include:

- “plug and play” connectivity
- sound options include microphone patch panel, house music, iPod docking, DVD and BluRay player and cable television
- HD projector with 189” motorized screen
- presentation audio and sound reinforcement with built-in wall speakers and control panel
- large window with motorized blackout shades provides full control of daylight levels.

Gallery One

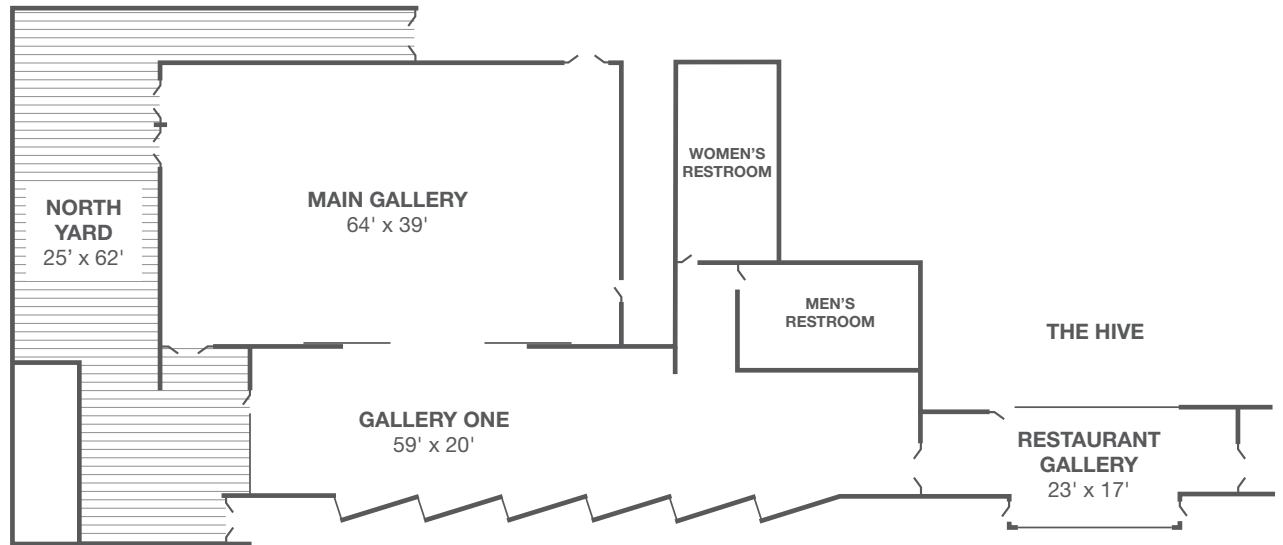
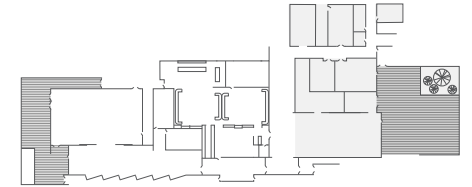
Located adjacent to the Main Gallery, this space is excellent for a cocktail hour or for flexibility should your guest list begin to grow.

North Yard

Move the party outside! Located adjacent to the Main Gallery, this outdoor space, equipped with audio technology, is ready whatever the weather. Ask our event team about tenting options.

Restaurant Gallery

Adjacent to Gallery One and with sliding doors that adjoin The Hive’s bar, this flexible space provides lots of options. It is ideal for a welcoming registration area or a semi-private cocktail gathering.





MEETING + EVENT SPACE FLOORPLANS

Gallery Two

Located off the Lobby Gallery this intimate space is can be used for small meeting breakout sessions.

Gallery Three

Equipped with presentation audio and a motorized projection screen, this space looks out onto the Art Yard and is the perfect setting for gatherings of up to 50 people.

Gallery Four

Like Gallery Three, this space is ideal for a variety of meetings and events of up to 40 people.

Video Gallery

Designed to share new media digital contemporary art, this gallery is outfitted with high definition projectors and is supported by some serious video software.

Conference Room

Equipped for HD video conferencing, the 21c Conference Room offers a 65" plasma television, table with integrated speakers and power/data ports, presentation audio and sound reinforcement. Get a dose of Vitamin D - skylights filter natural light into the space. Business Center

Business Center

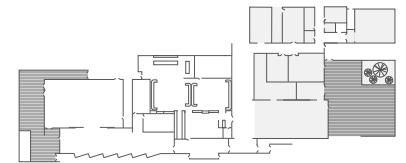
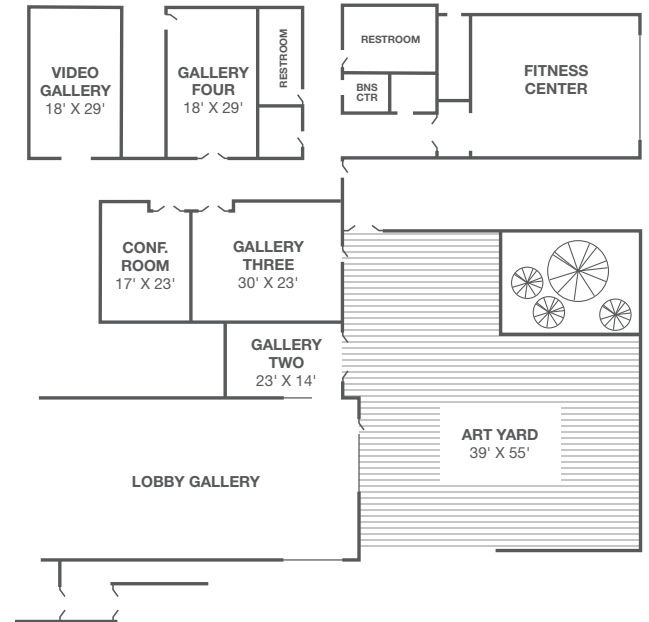
Open 24/7 for your convenience, the business is equipped with two Mac work stations and a printer.

Fitness Center

Feeling stressed? The 21c fitness center is stocked with state-of-the-art equipment so you can work it all out. Pump some iron or hop on the cutting edge cardio equipment (complete with integrated video and internet) to burn off those unwanted calories.

Art Yard

Take in some fresh air – and fresh art – by hosting your next event in the 21c Art Yard. Adjacent to the Lobby Gallery, Gallery Two, Gallery Three and the bike racks along Second Street, options are abound! With flexible furniture, a built-in fire pit and benches, the space allows guest to experience the great outdoors, 21c style.





THE HIVE FLOORPLAN

Chef's Table

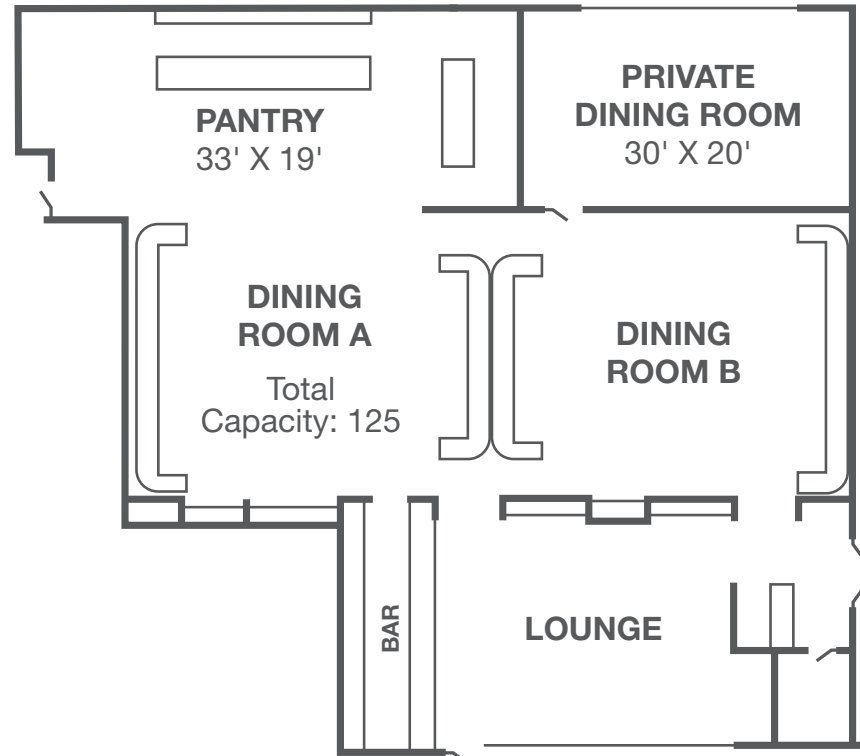
Gather round! Whether an afternoon cooking demo or an evening feast, a seat at the Chef's Table is always the best in town.

Private Dining Room

Whether you're hosting a big business dinner or a foodie fete with family and friends, The Hive's Private Dining Room is a comfortable, welcoming setting for groups of up to 45. Making a big speech? Don't fear – the PDR is equipped with independent audio controls.

Bar + Lounge

Shake things up! The 21c Event Team is happy to arrange for The Hive's bartenders to mix up a seasonally-inspired cocktail specially crafted for your big event.





21c SUITE FLOORPLAN

For a meeting or event that's guaranteed to rise above the rest, retreat to the exclusive 21c Suite. Offering a bird's eye view of Downtown Bentonville and all the luxurious touches you expect, the 21c Suite is the perfect place for a posh private gathering.

